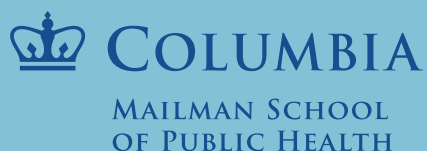
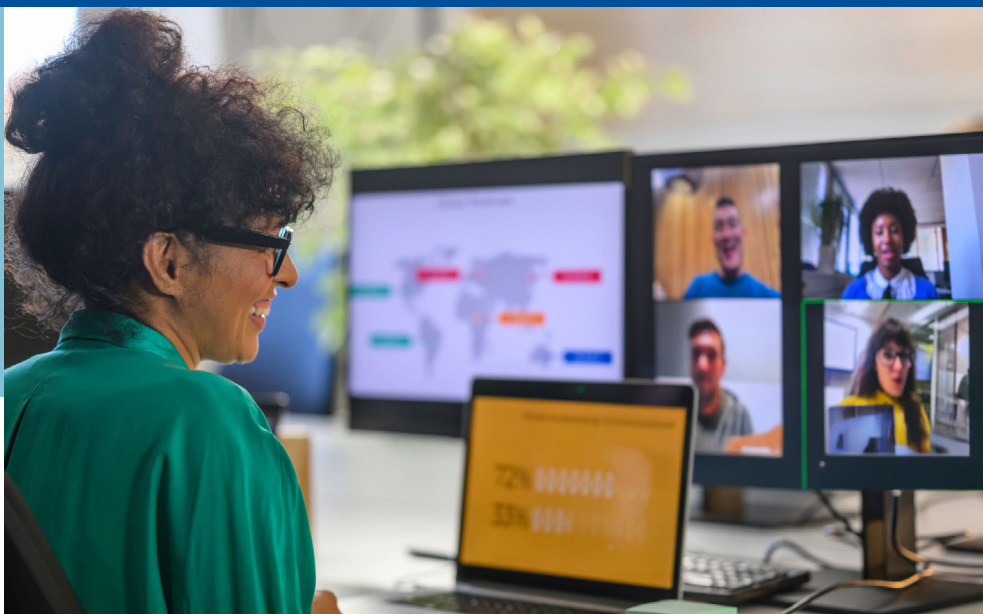


# Advanced MPH Online Program (AMPH)



The two-year Advanced MPH (AMPH) Online Program is ideal for the highly-motivated professional who wants to enhance their career by earning a degree in public health while working full time. Courses are taught both asynchronously and live, with the first year focusing on the Core curriculum and the second year expanding to courses from throughout Columbia Mailman School.



## The AMPH difference

- The AMPH program offers the unique opportunity for students to continue working while earning a degree from one of the top-ranked public health schools in the world. Our extensive campus support resources are accessible remotely and in person depending on a student's location.
- AMPH faculty are public health research innovators, community-based practitioners, and accomplished instructors who teach both onsite and online.
- AMPH students move through the program as a cohort, establishing strong personal and professional connections with a diverse group of deeply committed peers.

## Degree offered

- **Advanced MPH (online)**



## The AMPH student

Prior to enrolling, most AMPH students have already earned an advanced degree or completed at least two years of post-undergraduate, full-time professional work in clinical healthcare, research, community-based public health, or another healthcare adjacent field. By pursuing the AMPH degree, these students seek to enhance their ability to address complex public health challenges that demand a comprehensive and interdisciplinary perspective.

## Hands-on experience

**Practicum (APEX) opportunities for AMPH students include:**

- UnitedHealth Group — Development and implementation of pilot programs focused on the control of hypertension
- Department of Emergency Medicine Columbia University Irving Medical Center — Development of an onsite health equity program allowing public health students to function as small-project managers and/or public health educators
- Barnard College — Development and implementation of an on-campus kiosk providing STI educational materials

## Leaders in the field

**Our graduates hold positions in public health departments and agencies around the world:**

- Clinical Operations Manager at Columbia University Irving Medical Center
- Director of the Postsecondary Readiness Project at Advocates for Children of New York
- Vaccine Researcher at Pfizer

**My initial focus in the field has blossomed into a passionate interest across a spectrum of public health disciplines, sharpening my career objectives and fueling my ambition to effect meaningful change. This experience has expanded my horizons and instilled a deep sense of pride, unity, and commitment to our collective mission.**

*— John P., MD, MPH '24*

## Take the next step

- Visit us at <https://www.publichealth.columbia.edu/advmphonline>
- For program questions, contact Dr. Stephanie Grilo, Program Faculty Director, at [sag2179@cumc.columbia.edu](mailto:sag2179@cumc.columbia.edu) and Juli Parker, Program Associate Director, at [jp3600@cumc.columbia.edu](mailto:jp3600@cumc.columbia.edu)
- Send admissions questions to [ph-admit@columbia.edu](mailto:ph-admit@columbia.edu)